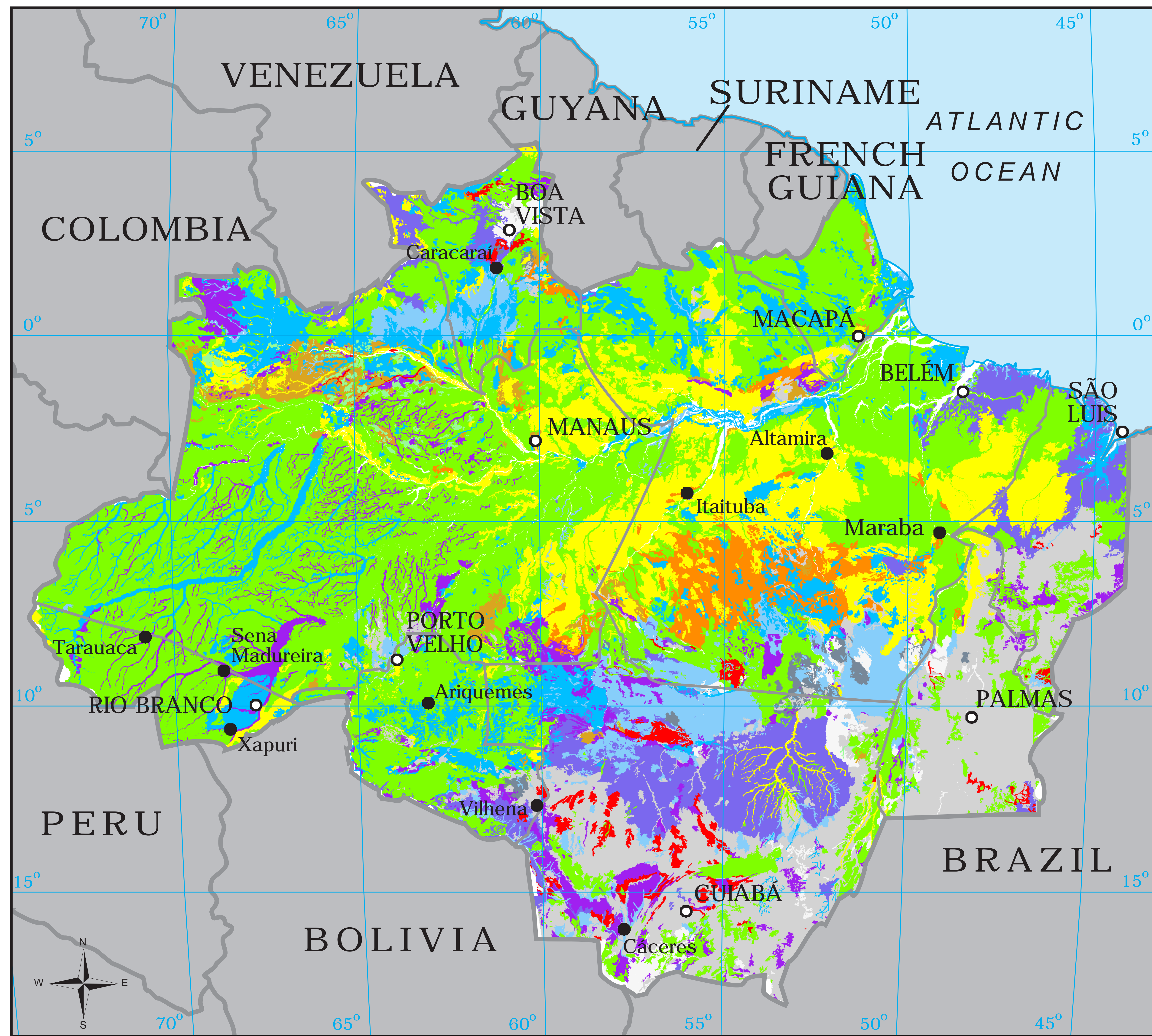


MEAN CARBON PER VEGETATION TYPE IN THE LEGAL AMAZON



Total Carbon (Mg/ha)

- Water
- 65-75
- 75-85
- 85-95
- 95-105
- 105-115
- 115-125
- 125-135
- 135-145
- 145-155
- 155-165
- 165-175
- 175-185
- 185-201
- Towns
- Capital City

